



CDL Gateway™ 10" Color TFT HMI

Application

The Monico CDLGateway™ HMI (Human Machine Interface) is a “Plug & Play” protocol converter and a full-featured HMI that provides direct access to engine monitoring parameters from Caterpillar® equipment via many different protocols and memory map formats. It is used in applications where engine data needs to be displayed for local users and operators in addition to being accessed from a PLC or SCADA system. No intermediate devices are needed and little or no setup is required.

Compatible Engines and Controls-Any ADEM II or ADEM III Engine Controller

- | | | | |
|------------|-------------|------------|-----------|
| • 3400 | • EMCP II+P | • G3600 | • GCM34 |
| • 3500B/C | • G3400 | • ADEM II | • ITSM |
| • EMCP II | • G3500 | • ADEM III | • ICSM |
| • EMCP II+ | • Marine | • G3520C | • EIS/AFR |

Input

- Two-Wire Data Link
- Concentrate data from other devices using multiple protocols

Host Interfaces

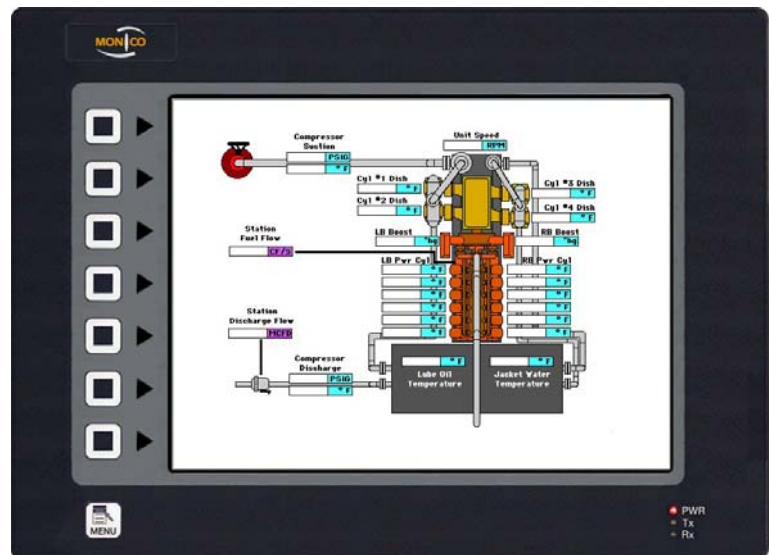
- Modbus RTU & TCP/IP via Serial and Ethernet
- PLC protocols including Allen Bradley, GE Fanuc, Siemens, and many more.
- BACnet and many other available protocols.
- Same capabilities as the other versions with the addition of a 10" Color TFT Touch Screen HMI

Features

- Pre-configured solutions with over 400 data registers
- UL 1604 Class I Division II Approval
- Outdoor rated with UV protection
- Built-In Web Server
- SMTP/SMS Mail Server
- Real-Time Data Logging via Compact Flash (2 GB Max)
- Full-featured Touch Screen with full Graphics capability

Installation

- Mount the Gateway in a panel near the Engine
- Connect the Data Link to the Gateway
- Supply 24 VDC power to the Gateway
- Display data on the HMI screen in Graphical form



*** See our web page at WWW.MONICOINC.COM for more information ***

Caterpillar is the registered trademark of Caterpillar, Inc.
Monico, Inc. is not affiliated with or sponsored by Caterpillar, Inc.