

MODEL XCCDL - CDL OPTION CARD FOR DATA STATION PLUS AND MODULAR CONTROLLER



- CONFIGURED USING MONICO VIEW™ SOFTWARE
- ISOLATED PORT CAPABLE OF COMMUNICATING WITH A CDL PORT
- EASY INSTALLATION

GENERAL DESCRIPTION

Both the Modular Controller Master (enhanced models) and Data Station Plus contain a proprietary expansion port which provides a high speed, parallel architecture that extends the functionality and flexibility of the platform. This approach allows these products to evolve concurrently with the latest advances in communications and standards, without sacrificing performance. This high bandwidth channel has significantly greater throughput when compared to the traditional (external) serial gateway approach.

The XCCDL option card adds a CDL port to the series. This isolated card protects user equipment from potentially harmful ground loops while providing high-speed CDL communication options to the end user.

The XCCDL communication card is easily installed by removing the blank expansion port cover of your Modular Controller or Data Station Plus, and plugging the XCCDL card into the expansion port. Configuration is simple using Monico's free Monico View™ software.

SAFETY SUMMARY

All safety related regulations, local codes and instructions that appear in the literature or on equipment must be observed to ensure personal safety and to prevent damage to either the instrument or equipment connected to it. If equipment is used in a manner not specified by the manufacturer, the protection provided by the equipment may be impaired.

Do not use the controller to directly command motors, valves, or other actuators not equipped with safeguards. To do so can be potentially harmful to persons or equipment in the event of a fault to the controller.



CAUTION: Risk of Danger.
Read complete instructions prior to installation and operation of the unit.

CONTENTS OF PACKAGE

- XCCDL option card
- This hardware bulletin

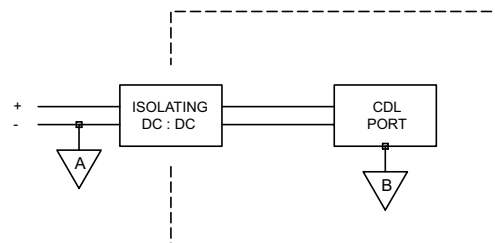
ORDERING INFORMATION

MODEL NO.	DESCRIPTION	PART NUMBER
XCCDL	CDL option card for Data Station Plus	OEMDA006

SPECIFICATIONS

- POWER REQUIREMENTS:** 24 V @ 35 mA max. Power is supplied to the option card from the main board of the Modular Controller Master or Data Station Plus.
- COMMUNICATIONS:**
CDL Ports: Isolated to help prevent ground loops.
Isolation from XCCDL Communication ports to the Modular Controller Master or Data Station Plus: 1000 VDC for 1 minute.
- CERTIFICATIONS AND COMPLIANCES:**
Consult factory.
- ENVIRONMENTAL CONDITIONS:**
Operating Temperature Range: 0 to 50°C
Storage Temperature Range: -20 to 80°C
Operating and Storage Humidity: 80% maximum relative humidity (non-condensing) from 0 to 50°C.
Altitude: Up to 2000 meters.
- CONSTRUCTION:** For indoor use only. Installation Category II, Pollution Degree 2.
- INSTALLATION REQUIREMENTS:** See "Installing the XCCDL Option card" for more details.
- WEIGHT:** 1.7 oz (48.2 g)

BLOCK DIAGRAM



INSTALLING THE XCCDL OPTION CARD

1. Remove power from the unit
2. Insert a flat-bladed screwdriver into the slot at the top of the expansion port cover. Gently apply pressure on the screwdriver in an upward direction until the expansion port cover disengages from the unit as shown in Figure 1.
3. Verify that the option card knobs are in the “unlocked” position as shown in Figure 2.
4. Carefully insert the option card into the expansion port opening while aligning the card-edge connector on the option card with the main board's header, as shown in Figure 3. Once aligned, gently press on the front of the card until it is flush with the front of the case.
5. Turn the option card knobs to the locked position as shown in Figure 4.



Caution: The expansion and main circuit boards contain static sensitive components. Before handling the cards, discharge static charges from your body by touching a grounded bare metal object. Ideally, handle the cards at a static controlled clean workstation. Also, handle the cards by the edges only. Dirt, oil, or other contaminants that may contact the cards can adversely affect circuit operation.



Warning: Risk of Danger: Be sure to remove all power before removing the expansion port cover

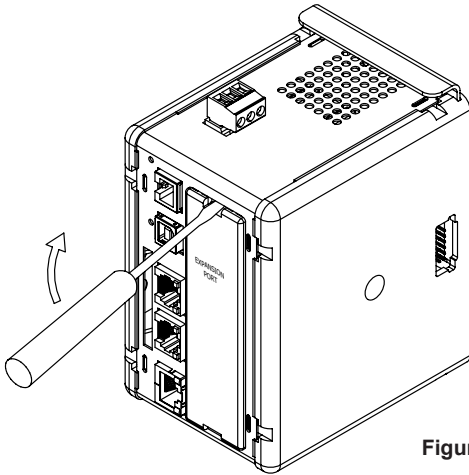


Figure 1

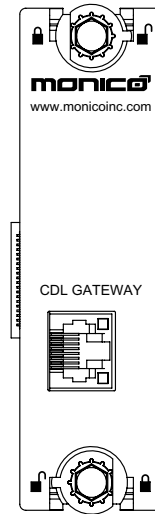


Figure 2

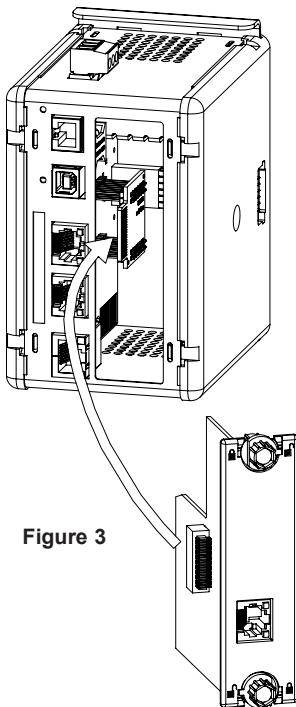


Figure 3

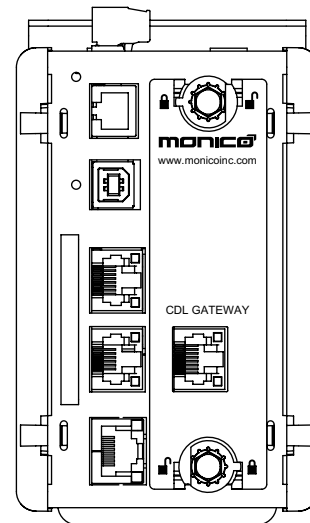


Figure 4

POWER SUPPLY REQUIREMENTS NEW AND EXISTING INSTALLATIONS

The XCCDL option card draws all of its power from the main board of the Modular Controller Master or Data Station Plus. The specifications of the Modular Controller Master or Data Station Plus account for the power needs of an option card.

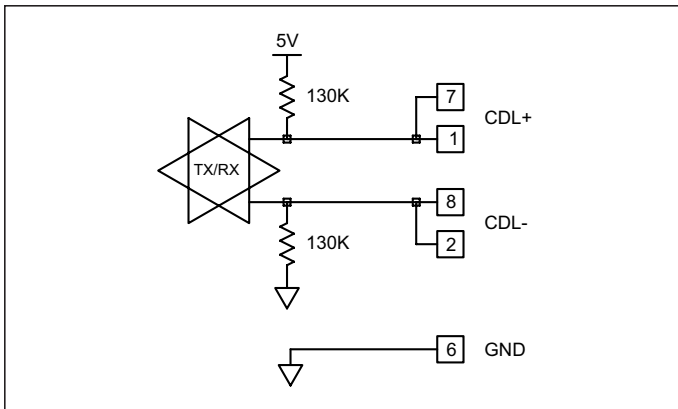
COMMUNICATING WITH THE XCCDL OPTION CARD

CONFIGURING A XCCDL OPTION CARD

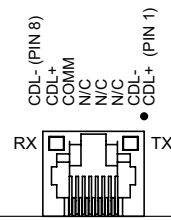
The XCCDL is configured using Monico View software. Monico View is available as a free download from www.monicoinc.com, or it can be ordered on CD. Updates to Monico View for new features and drivers are posted on the website as they become available. By configuring the XCCDL using the latest version of Monico View, you are assured that your unit has the most up-to-date feature set. Monico View software can configure the XCCDL through the RS232 PGM port, USB port, Ethernet port, or CompactFlash socket on your Modular Controller Master or Data Station Plus. Additional information can be found in your Modular Controller Master or Data Station Plus hardware bulletin and the Monico View user manual.

CDL COMMS PORT

The XCCDL option card has one CDL port.



SOFTWARE/UNIT OPERATIONS XCCDL PORT PIN OUTS



LEDS

The transmit LED(TX) will flash when information is transmitted from the XCCDL card. The receive LED(RX) will flash when information is received.

MONICO VIEW SOFTWARE

Monico View software is available as a free download from www.monicoinc.com or it can be purchased on a CD, see "Ordering Information" for part number. The latest version of the software is always available from the web site, and updating your copy is free.

TROUBLESHOOTING YOUR XCCDL OPTION CARD

If for any reason you have trouble operating, connecting, or simply have questions concerning your new XCCDL option card, contact Monico's technical support. For contact information, refer to the back page of this bulletin for phone and fax numbers.

EMAIL: support@monicoinc.com

Web Site: <http://www.monicoinc.com>

LIMITED WARRANTY

The Company warrants the products it manufactures against defects in materials and workmanship for a period limited to two years from the date of shipment, provided the products have been stored, handled, installed, and used under proper conditions. The Company's liability under this limited warranty shall extend only to the repair or replacement of a defective product, at The Company's option. The Company disclaims all liability for any affirmation, promise or representation with respect to the products.

The customer agrees to hold Red Lion Controls and Monico Monitoring, Inc. harmless from, defend, and indemnify RLC against damages, claims, and expenses arising out of subsequent sales of RLC products or products containing components manufactured by RLC and based upon personal injuries, deaths, property damage, lost profits, and other matters which Buyer, its employees, or sub-contractors are or may be to any extent liable, including without limitation penalties imposed by the Consumer Product Safety Act (P.L. 92-573) and liability imposed upon any person pursuant to the Magnuson-Moss Warranty Act (P.L. 93-637), as now in effect or as amended hereafter.

No warranties expressed or implied are created with respect to The Company's products except those expressly contained herein. The Customer acknowledges the disclaimers and limitations contained herein and relies on no other warranties or affirmations.

Red Lion Controls
20 Willow Springs Circle
York PA 17406
Tel +1 (717) 767-6511
Fax +1 (717) 764-0839

Monico Monitoring, Inc.
3403 Chapel Square Dr.
Spring TX 77388
Tel +1 (281) 350-8751
Fax +1 (281) 754-4633